

# Melbourne

*Aluminium & Iron Lacework*

Edition 8

BELLA ARTISTIC FUNCTIONAL WELDABLE  
ITALIAN DESIGNED WROUGHT IRON COMPONENTS





**Art. 159/1**  
 8 x 8 mm  
 35 x 90 mm  
 0.056 kg

**Art. 159/2**  
 10 x 10 mm  
 55 x 110 mm  
 0.120 kg

**Art. 159/3**  
 12 x 12 mm  
 60 x 122 mm  
 0.210 kg

**Art. 159/5**  
 16 x 16 mm  
 78 x 145 mm  
 0.448 kg

**Art. 159/6**  
 20 x 20 mm  
 80 x 165 mm  
 0.718 kg



**Art. 128/9**  
 43 x 65 mm  
 Hole Ø 16.5 mm  
 0.296 kg

**Art. 128/11**  
 43 x 65 mm  
 Hole Ø 20.5 mm  
 0.202 kg



**Art. 128/17**  
 39 x 38 mm  
 Hole Ø 12.5 mm  
 0.116 kg

**Art. 128/21**  
 44 x 43 mm  
 Hole Ø 16.5 mm  
 0.222 kg

**Art. 128/23**  
 44 x 43 mm  
 Hole Ø 20.5 mm  
 0.192 kg



**Art. 128/6**  
 37 x 63 mm  
 Hole Ø 12.5 mm  
 0.259 kg

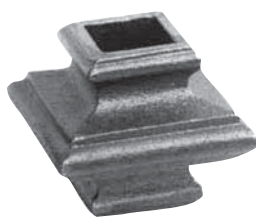


**Art. 155/2**  
 30 x 65 mm  
 Hole Ø 12 mm  
 0.070 kg

**\*WELDABLE CAST IRON, GALVANIZING IS NOT RECOMMENDED\***



**\*Art. 746/1**  
 37 x 41 mm  
 Hole Ø 12 mm  
 0.150 kg



**\*Art. 746/2**  
 53 x 45 mm  
 Hole Ø 20 mm  
 0.268 kg



**\*Art. 746/3**  
 45 x 48 mm  
 Hole Ø 16 mm  
 0.250 kg



**\*Art. 746/5** NEW  
 40 x 65 mm  
 Hole Ø 14 mm  
 0.200 kg



**\*Art. 747/4**  
 35 x 20 mm  
 Hole Ø 16 mm  
 0.038 kg



**\*Art. 747/3**  
 34 x 20 mm  
 Hole Ø 16 mm  
 0.052 kg



NEW **\*Art. 1390/5**  
 40 x 65 mm  
 Hole Ø 16 mm  
 0.216 kg

**CAST STEEL**



**Art. 747/12**  
 40 x 65 mm  
 Hole Ø 12 mm  
 0.230 kg

**Art. 747/13**  
 45 x 68 mm  
 Hole Ø 14 mm  
 0.346 kg



**Art. 747/15**  
 39 x 39 mm  
 Hole Ø 12 mm  
 0.140 kg



NEW

**Art. 1391/21**  
 38 x 44 mm  
 Hole Ø 12 mm  
 0.172 kg

**Art. 1391/22**  
 38 x 44 mm  
 Hole Ø 14 mm  
 0.146 kg

**Art. 1391/23**  
 38 x 44 mm  
 Hole Ø 16 mm  
 0.140 kg

*B & C Foundries Pty. Ltd*

*A.B.N. 85 269 424 329*

*Trading As*

*Melbourne Aluminium & Iron Lacework*

*452 Heidelberg Road, Fairfield, Victoria 3078.*

*Telephone: (03) 9489 5100 Fax: (03) 9489 5956*

*[www.melbournelacework.com.au](http://www.melbournelacework.com.au)*